



WHISTLING
WOODS
INTERNATIONAL

INSTITUTE OF FILM, COMMUNICATION & CREATIVE ARTS

FASHION & COSTUME DESIGN

ECLECTICA

EMERGE - EVOLVE - ELEVATE



DECODING THE
FUTURE OF FASHION

AIYANNA
2026

FASHION GRADUATION SHOW

INDEX



1. ABOUT WHISTLING WOODS INTERNATIONAL
2. LEADERSHIP
3. FACULTY & MENTORS
4. COLLECTIONS
5. OUR STUDENTS
6. SPECIAL MENTIONS
7. PROGRAMME SPECIFICATIONS
8. BATCH OF 2026

- PANKHUL SHADANI
- HIMADRI GARG
- ANANYA VIRMANI
- DEVANSHI VORA
- KASHISH SHAH
- SHREYA DHARESHWAR
- ARCHIE SINGHVI
- SIDDHI PATIL
- SAGARIKHA RAVISHANKAR
- RIYA PANKHADE
- MAHI SONI
- RESHMA POTALKAR
- JIYA DEDHIA
- RIYA PARMAR
- SHRUTI D'SOUZA
- BHOOMIKA PANCHAL
- SAKSHI MANTRI
- VAISHNAVI PHAD
- SONALI PRIYA
- PALAK JAIN
- SHRAVANI KANADE
- RIYA MITTAL
- SHRADDHA DINDE
- ROSETTE D'SOUZA
- VIDHI KAVTE





About WWI

Whistling Woods International (WWI) is India's premier institute for Film, Communication, and Creative Arts. Founded by Subhash Ghai in 2006, WWI has been committed to delivering world-class education across filmmaking, media communication & management, animation, game design, fashion & costume design, visual communication design, acting, and music production & composition. Located within Mumbai's iconic Filmcity Complex, the institute offers students a unique environment where they gain both theoretical knowledge and hands-on practical experience in their chosen fields.

WWI provides its students with state-of-the-art infrastructure and a vibrant learning environment designed to nurture creativity and innovation. Our mission is to empower aspiring storytellers and creators to realize their dreams, challenge conventions, and shape the future of the media and entertainment industry. Today, over 4,300 WWI alumni are successfully working across diverse sectors of the global Media & Entertainment industry.

Spread across a 5.5-acre campus, WWI is equipped with industry-grade facilities and cutting-edge technology that enable students to develop both the academic and practical aspects of their craft. Our vision to build a globally benchmarked institution that sets new standards for excellence in creative education is supported by partnerships with technological giants like Adobe, Dolby, FoxConn, Google (YouTube), Red Digital Cinema, Reliance Jio, Sony & many more.

WWI's courses are affiliated with TATA Institute of Social Sciences (TISS), the industry-oriented curriculum offers a distinctive blend of theory and practical application, with a strong emphasis on preparing students to be industry-ready professionals. The curriculum is built on three core pillars: Creativity, Business Acumen, and Technical Skills, ensuring a holistic approach to creative education.

Leadership

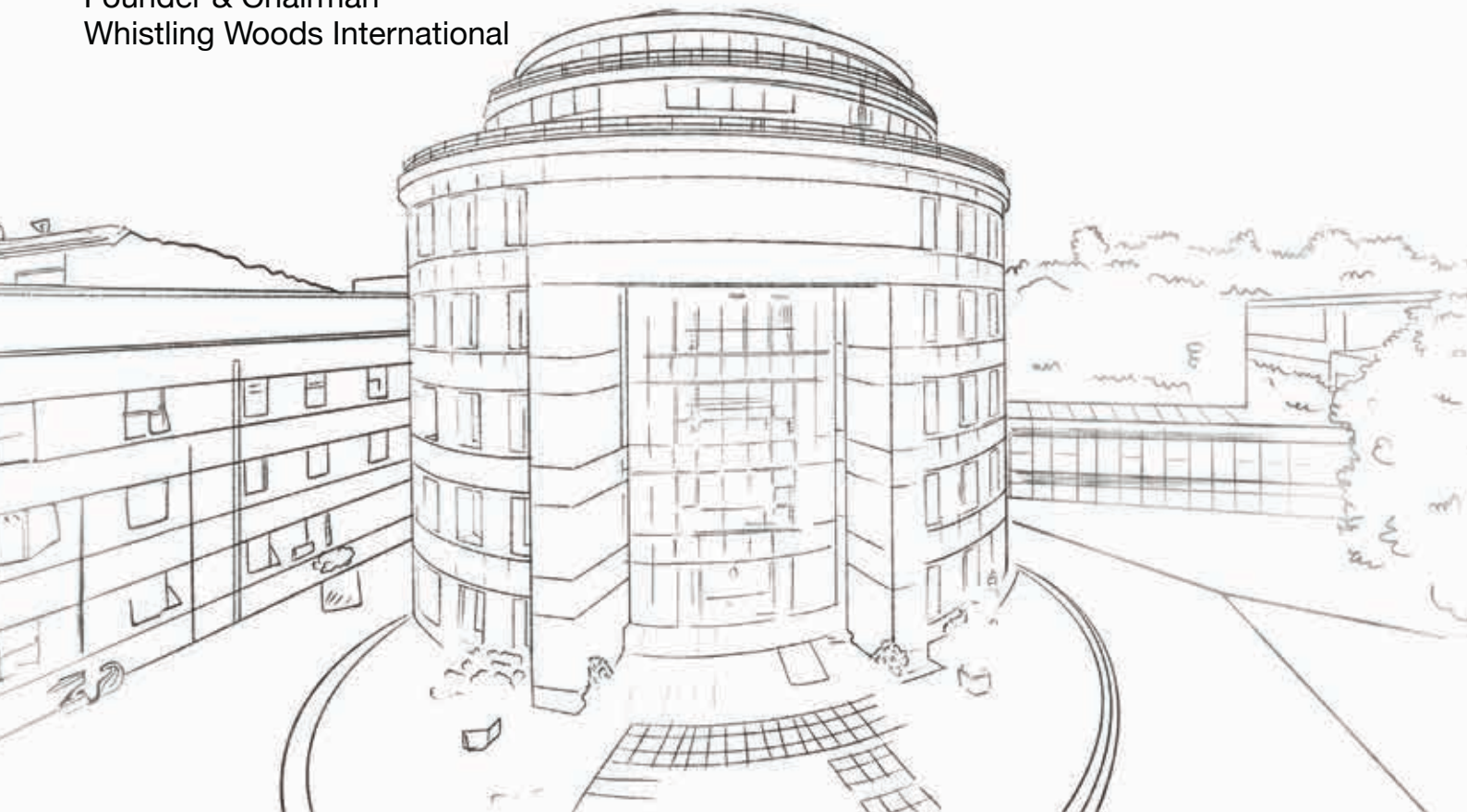


At Whistling Woods International's School of Fashion & Costume Design, we believe creativity must remain rooted in authenticity. India's greatest strength lies in its craftsmanship—in its artisans, handlooms, textiles, and centuries of tradition. But true design education is not only about preserving heritage; it is about reimagining it for the future. Our School of Fashion & Costume Design prepares the students to bridge this timeless richness with a contemporary and universal voice.

Congratulations to the graduating batch of School of Fashion & Costume Design students who have brought their imagination to life through this outstanding showcase. You are not merely designers. You are storytellers of a new India, an India whose creativity is ready to inspire the world.

Subhash Ghai

Founder & Chairman
Whistling Woods International





Meghna Ghai Puri

President
Whistling Woods International

The School of Fashion & Costume Design encourages a balance of creativity and discipline, artistic instinct and industry understanding. Through this journey, students learn to translate ideas into meaningful design while remaining grounded in craft, authenticity, and innovation.

Aiyanna 2026 is a testament to that journey. It showcases the dedication, resilience, and individuality of our graduating batch of students - each collection reflecting months of research, experimentation, and personal expression. This is the stepping stone for our young designers to step into a rapidly changing world with fresh perspectives and the confidence to contribute meaningfully.

Congratulations to all the students who have brought their vision to life through this showcase. This moment marks not only the completion of your academic journey, but the beginning of your professional story. We look forward to seeing how you shape the future of fashion and creativity.

At Whistling Woods International, we have always believed that education in the creative arts must go beyond skill-building - it must nurture perspective, confidence, and the courage to tell meaningful stories. Fashion, today, sits at a remarkable crossroads of culture, media, identity, and innovation, making it one of the most powerful forms of creative expression.

Aiyanna 2026 is a reflection of that spirit. It represents months of exploration, discipline, collaboration, and self-discovery by the School of Fashion & Costume Design's graduating batch. Each collection showcased here carries not only design sensibility but also personal narratives, cultural references, and an understanding of the evolving world around us. Aiyanna 2026 showcase reflects a generation of young creators who understand that fashion is not only about garments - it is about storytelling, emotion, and identity. This spectacular showcase demonstrates that our students have learned to design with purpose, vision, and responsibility.

I congratulate every student for the passion and perseverance that brought them to this moment. This showcase is not just the culmination of your academic journey but the beginning of your voice in the world. We are proud to witness the stories you are ready to tell through fashion.



Rahul Puri

Director, Academics
Whistling Woods International



Jewellyn Alvares

HOD, School of Fashion
and Costume Design
Whistling Woods International

To my very first graduating batch of Bachelors of Design in Fashion and Costume Design, Whistling Woods International.

Watching each one of you grow through these years has been one of the most rewarding journeys as a mentor. You entered with curiosity, uncertainty, excitement, and raw imagination and today, you leave as designers with a voice, a perspective, and a creative identity that is uniquely your own. This indeed makes us feel accomplished as we see the skills that you have acquired to be the designers of the future.

What makes this batch special is your individuality. Each of you learned to think differently, question fearlessly, experiment boldly, and create with intention. In studios, presentations, late nights, and moments of self-doubt, you discovered that design is not only about aesthetics — it is about courage, discipline, storytelling, and humanity.

I have seen you evolve into creators who are extremely expressive, and fiercely original. Some of you found confidence in construction, some in concept, some in detail, and some in fracturing thumb rules beautifully. It is this diversity that sets each of you apart.

As you step into the fashion industry, remember that authenticity will always remain timeless. Protect your individuality. Continue to observe, learn, adapt, and create fearlessly.

Your first collection is a lifetime of memories stitched into each seam, infused with each shade, personified by every motif, reinforced by each grommet and be everlasting with the yards of textile that had been used. What will define you is your ability to continue creating with honesty and passion.

Thank you for trusting me as your mentor and witnessing your journey thus far has been quite an experience and I will always be looking out for each milestone you achieve. You will always hold a special place in my heart because you helped build not only your futures, but also the spirit and identity of this class. I've learned as much from you as I hope you did from what I had to share.

Go forward with confidence. Create boldly. Stay curious. And never stop designing the world the way only you can see it.

Reyaz Ahmad

Faculty & Mentor

Mentoring Semester 8 students through their graduation collections has been a deeply rewarding journey. As Fashion Design Faculty and Mentor, I have seen them evolve from curious learners into confident designers with distinct creative voices and strong design sensibilities.

What stands out most is their individuality, dedication, and willingness to experiment and push boundaries. Each collection reflects thought, effort, and a unique perspective, making the entire process truly inspiring. I wish them the very best as they step into the industry. May they continue to trust their creativity, stay passionate, and grow into designers who make a meaningful impact in fashion.

I feel truly blessed to have had you all as my team over the last few months of your course. As you now step out into the world, I wish you the very best in life—stay strong, as the world will not always be as lenient as college has been; stay open, as there will be much to learn and unlearn along the way; and welcome new ideas that help you grow and move forward. Choose your paths wisely, in ways that truly realise your potential, and remember not to imitate others—always stay true to yourself. If you ever need guidance, I'm just a call away. God bless you all.

Lancy Dsilva

Faculty & Mentor

Sayli Sawant

Mentor

Teaching has always been close to my heart, but it is my students who truly define who I am as a teacher, and their success is what makes this journey meaningful. As you graduate today and step into the world as designers, I am filled with fond memories of our time together in the classroom, on trips, and across campus. Remember that success and failure are both essential parts of growth, and every experience in life shapes who you become. I will miss you all deeply, but will always cherish these years with gratitude and hope, wishing you the very best as you reach for the stars.

Faculty & Mentors



**Anamika
Banerjee**



**Anuj
Bhatt**



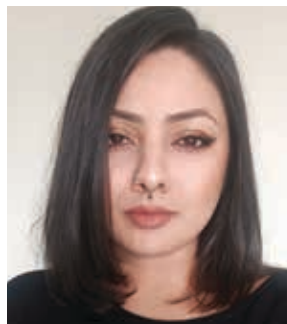
**Florine
D'souza**



**Lancy
D'silva**



**Momita
Sharma**



**Nidhi
Pancholi**



**Nikhil
Purohit**



**Parvez
Qureshi**



**Radha
Rapelli**



**Reyaz
Ahmed**



**Rohit
Goyal**



**Dr. Rugmani
Venkatadri**



**Sabira
Fernandes**



**Sahil
Gada**



**Sayli
Sawant**



**Shivani
Vora**



**Tejasvini
Ahuja**



**Umesh
Mohite**



P



Puppet Master

This collection is inspired by a lucid dream that begins as an enchanting escape and slowly unravels into a loop of entrapment, moving through five psychological stages: Sleep, Bound, Manipulator, Puppet, and Carnival, tracing a shift from comfort to chaos where the dreamer becomes both participant and prisoner of their own subconscious. The palette evolves with this journey, from muted pastels and soft neutrals that evoke safety and intimacy, deepening into maroons, bruised reds, and shadowed tones that symbolize tension and unease, and finally culminating in unexpected, jarring color combinations that capture the delirium of a dream gone rogue. The collection explores the fragile boundary between control and surrender, asking whether we command our dreams or are controlled by them.

- Pankhul Shadani



Nostalgia

A Journey Back to the Comfort of Childhood explores growing older and the longing to reconnect with the simplicity of childhood. It views nostalgia as an emotional bridge, returning to moments that once felt ordinary but now hold warmth, comfort, and meaning. Built around an archive of joy, the collection celebrates innocence, freedom, happiness, and emotional safety found in early memories. It reflects the idea that growth does not mean leaving joy behind, but carrying it forward. Inspired by school uniforms, birthday ribbons, dressing up, and small moments with loved ones, these memories are translated through structured tailoring softened by oversized bows, ribbon ties, playful frills, gathered hems, and school inspired blazers. A palette of soft pastels evokes tenderness and innocence, turning the collection into a wearable archive of comfort, belonging, and the happiness of childhood.

- Himadri Garg





GEN Z Hyperopia

Gen Z Hyperopia explores how Gen Z looks beyond the present, navigating multiple realities at once. Rather than the common view of being distracted or fragmented, the collection presents them as a generation constantly processing, adapting, and connecting different worlds simultaneously.

The designs use panels, layers, and intersecting forms to create cohesive structures. 3D printed elements, pipes, embroidery patches, and paper balloons express versatility and interconnectedness, showing how Gen Z functions as a unified system rather than separate parts.

This collection also reflects patience, perseverance, and belief in one's vision, tracing the journey of turning ideas into reality while growing as both a designer and an individual.

- **Ananya Virmani**









The Threads of Belongings

This collection explores garments as living archives, keepers of memory, emotion, and time. Clothing becomes a vessel that preserves fragments of identity, carrying stories of childhood, intimacy, growth, and transformation. It begins with bright playful tones, neon pinks, vivid oranges, yellows, and multicolored textures, symbolizing the innocence, joy, and spontaneity of early memories. Layered textures and expressive silhouettes reflect the fragmented yet vivid nature of remembrance. As the collection progresses, the palette deepens into muted browns, smoky greys, and plum tones, representing aging, emotional maturity, and the way memories soften with time. Through this transition, the collection reflects how garments become more than objects, they become preserved moments where every thread holds a story.

- Devanshi Vora





After the Noise, Where the City Exhales

This collection captures the rare moment at the end of the day when the crowd fades, the journey ends, and something inside finally settles. It is not about escaping the city, but finding peace within it. Strong, sharp shoulders reflect resilience, while wide sunray pleated trousers open and breathe with movement and rest. Textured knits, woven blacks, and suiting add weight and structure, while layered organza floats like a fading thought. Prints blend Fort, Kala Ghoda, and Bandra's old streets with glowing night skylines through digital glitch effects, where old Bombay and new Mumbai exist together. Black grounds the collection. Everything else is the city, dreaming.

- **Kashish Shah**





She Who Is Seen

She Who Is Seen explores the blurred line between performance, power, and possession. Inspired by the historical shift of women who once performed Bharatanatyam in royal courts and were later reduced to identities shaped by ownership and control, the collection reflects the loss and reconstruction of self. It unfolds through three archetypes: The Embracer, who reclaims power through bold sensuality; The Dreamer, who escapes through fantasy and nostalgia; and The Spy, who survives through silence and observation.

The garments express these identities through layering, fragmentation, and hybrid construction, blending traditional Indian elements with contemporary silhouettes. Reworked drapes, disrupted panels, and contrasting textiles reflect inner conflict and duality. A palette of deep reds, burgundy, indigo, muted creams, and antique gold symbolizes desire, secrecy, faded innocence, and the weight of adornment. Rather than recreating history, the collection reinterprets its emotional residue, asking what happens when identity is no longer self defined but shaped by those in power.

- **Shreya Dhareshwar**





R.O.M - C.O.M

Romance of Modern City Wear & Mood

A capsule collection with ONLY, inspired by the global appeal of Emily in Paris and the renewed focus on modern femininity seen in Chanel's A/W 2025 show. It blends Parisian-inspired sophistication with American playfulness, moving beyond the idea of "French chic" as restrained and instead embracing expressive, individual styling.

The concept reflects the rise of "main character energy," where every woman dresses as the lead of her own story through playful, experimental, and relatable fashion.

Designed for a fast-moving, trend-driven audience, the collection taps into micro-trends and social media-ready dressing. It balances structured silhouettes with coordinated styling, urban colour tones, and feminine emotional expression, making it youthful, relevant, and commercially viable for ONLY.

- Archie Singhvi







Palimpsest

Derived from the Greek palimpsēstos meaning “scraped again,” a palimpsest is a manuscript where old writing is erased yet still visible beneath new text. For this collection, it becomes a metaphor for memory, transformation, and the layered life of materials.

Rooted in upcycling, the collection is created from discarded and personally sourced textiles, each carrying its own history and emotional value. Faded prints, wear, and imperfections are treated as design foundations rather than flaws.

Through textural overlays, structural recomposition, appliqué, beadwork, and layered embroidery, each fabric is rewritten while preserving traces of its past.

Beyond waste reduction, the collection explores emotional durability, creating garments that hold multiple timelines within them like living archives.

Palimpsest redefines beauty as the visible accumulation of time rather than perfection. These garments become more than clothing, they are narratives, remembered, reclaimed, and continuously rewritten.

- **Siddhi Patil**



Red Thread of Fate

This collection is inspired by the Asian belief of the Red Thread of Fate, the idea that two destined people are connected by an invisible red thread that, no matter how tangled or stretched, always leads them back to each other. The silhouettes blend Japanese and Chinese influences, balancing structure with fluidity through contemporary reinterpretations of traditional forms. Ruching, crochet, and smocking symbolize the knots, twists, and tension of the thread, reflecting how relationships can become strained and imperfect while the bond remains unbroken. Red runs throughout the collection as a symbol of fate, love, and destiny, balanced with softer tones of harmony. Each piece captures the journey of connection, complicated, fragile, yet ultimately inevitable.

- Sagarikha R







The Art of Withholding

There is strength in what remains unspoken. The Art of Withholding explores emotional restraint, where feelings, truths, and identities are suppressed not as absence, but as acts of protection, fear, and control. The collection unfolds through five phases. Disconnect introduces stiff, obscured silhouettes in greys and blacks, expressing alienation. Hold uses rigid forms and vivid reds to symbolize pressure and emotions contained within. Hesitation softens into elongated silhouettes with deep purples, reflecting uncertainty between concealment and release. Breaking Point fractures into angular forms and stark contrasts, representing instability and emotional rupture. Reveal concludes with fluid, asymmetrical silhouettes in muted purples and neutrals, expressing vulnerability and partial liberation.

Through this progression, withholding becomes visible as tension, structure, and eventual exposure, where concealment slowly gives way to revelation.

- Riya Pankhade





Dark Romanticism

Shadows of the Soul is a deeply personal exploration of Dark Romanticism, finding beauty in mystery, melancholy, and the emotional depths of the human psyche. The collection reflects the balance between vulnerability and strength, translating garments into both art and armor.

Sharp architectural cages, skeletal frames, and structured silhouettes symbolize invisible boundaries and pressures, while soft feathers, fur, and voluminous textures represent the untamed inner spirit. This contrast between rigid and organic forms expresses the duality of being fragile yet fierce. Bold exaggerated silhouettes, cobweb necklines, sheer overlays, and dramatic high low skirts create a sense of protection, elegance, and power.

A moody palette of deep blacks and regal purples is illuminated with rhinestones and shimmering details, like light breaking through darkness.

Shadows of the Soul celebrates the modern woman who embraces her complexity and transforms emotion into an avant garde expression of resilience and grace.

- Mahi Soni



Metamorphosis of My Life

Morpho is a visual autobiography exploring metamorphosis as both personal and technical transformation. It traces my journey from a self taught background to the disciplined world of professional design. Rather than simple change, the collection reflects the rebuilding of the self, where raw ambition is reshaped through formal education. Inspired by the chrysalis and the catalyst of a scholarship opportunity, it marks the turning point where limited resources evolved into refined skills and precision. Like the Morpho butterfly, whose brilliance comes from the structure of its wings, this collection celebrates growth built through layers of resilience, learning, and determination.

- Reshma Potalkar





Weight of Secrets

Secrets are invisible, yet they carry weight. They do not stay in the mind alone, they settle into the body, shaping posture, breath, and presence. What is hidden does not disappear, it builds pressure and quietly alters the self. This collection explores the tension between concealment and revelation. Secrets may protect, but they also isolate. Over time, they accumulate into a silent burden, creating a constant balance between control and collapse. It reflects the experience of holding truths that cannot be spoken, the discipline of silence, the strain of knowing, and the complexity of carrying what cannot be shared. Secrets reveal themselves in subtle ways: hesitation, restraint, and the spaces between words. They shape identity and blur the line between what is real and what is presented. At its core, Weight of Secrets reminds us that what we do not say often weighs more than what we do.

- **Jiya Dedhia**









She Is You

She Is You explores the quiet beauty of contradiction, where softness coexists with resilience and strength is expressed through composure, endurance, and self-possession. As the first expression of Etched Studios, the collection establishes the brand's identity through a balance of opposing forces: delicate and hardened, polished and raw, feminine and fearless. Imperfect details such as undone stitches, worn edges, and raw finishes are embraced as marks of authenticity rather than flaws, reflecting honesty and individuality. Designed for a woman who knows herself while continuing to evolve, the garments are intentional, expressive, and premium, made to stand out without seeking attention. Ultimately, She Is You is an ode to duality and the modern woman: layered, evolving, and unapologetically real.

- Riya Parmar



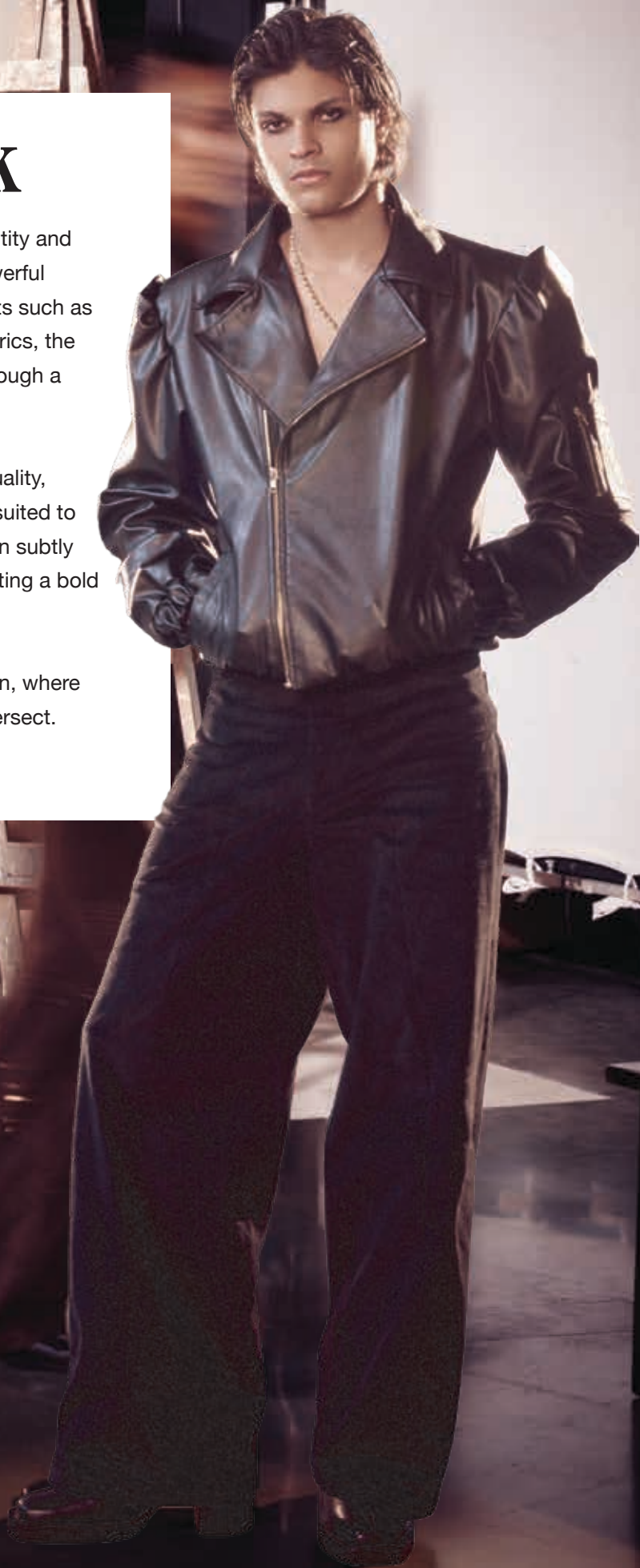
Raised in Black

This collection draws inspiration from the visual identity and spirit of the Black Panther Party, particularly the powerful movement of the 1960s. Focusing on iconic elements such as leather jackets, strong silhouettes, and utilitarian fabrics, the collection reinterprets these historical references through a contemporary fashion lens.

The designs explore structure, strength, and individuality, transforming archival influences into modern forms suited to today's context. While evolving in form, the collection subtly preserves the essence of the original aesthetic, creating a bold and relevant fashion statement.

It becomes an exploration of heritage and reinvention, where political symbolism, identity, and modern design intersect.

- **Shruti Dsouza**





Still Becoming

Still, Becoming explores time as something felt through emotions rather than measured by clocks. Inspired by a personal journey of delay, repetition, and feeling stuck, the collection reflects how time can feel heavy and stagnant even when effort continues.

The narrative moves through five stages: delay expresses hesitation and waiting, repetition reflects exhausting cycles, and stuckness captures restriction and stillness. It then shifts into adjustment, symbolizing awareness and renewed effort, before reaching completion, a moment of release, clarity, and courage to move forward.

The collection embodies the paradox of being motionless yet continuously growing. Through garments, it transforms emotional time into form, showing that even in stillness, change is always unfolding.

- **Bhoomika Panchal**





The Interwoven Life: Tanna Banna

Tanna Banna, the warp and weft of weaving, is the foundation of every fabric and the inspiration behind this collection. Beyond technique, it becomes a metaphor for human connection and the relationships that shape us. Just as a single thread gains strength through the weave, identity is formed through meaningful bonds. The collection reflects my own life, where family becomes the warp, the steady foundation, and I become the weft, moving through shared emotions and experiences. Together, these intersections create resilience, support, and belonging.

Blending traditional basketry techniques with couture fluidity, the garments visualize the invisible ties that hold us together. Each loop and knot carries meaning, reminding us that life is not built in isolation, but through constant interconnection.

- **Sakshi Mantri**



Subconscious Landscape

Mapping the Unseen Within

Before I could understand my emotions, I could see them. This collection stems from recurring abstract patterns in my subconscious, each linked to a specific emotion. Though the intensity shifts, the forms remain constant, becoming a personal language for feelings difficult to express. The five prints used throughout the garments are drawn directly from these patterns, functioning as emotional imprints rather than decoration. Viewing the subconscious as a shifting landscape, the collection explores anxiety, tension, isolation, and inner conflict. It rejects romanticized healing, embracing the raw and often uncomfortable nature of growth.

Distorted silhouettes, asymmetry, layered constructions, gathering, compression, and irregular paneling translate emotional pressure, fragmentation, and release into physical form. With a restrained palette, the collection lets form and texture carry the emotion. Each garment becomes part of a wearable map of the unseen self, focused not on resolution, but recognition.

- Vaishnavi Phad







Gold Like

My collection, Gold Like, is inspired by my personal journey with my name, Sonali. As a child, I disliked my name due to teasing in school and often questioned its meaning. However, in the 7th standard, a teacher explained that “Sonali” means “golden,” which completely changed my perspective. Since then, I have embraced my name with pride, realizing the importance of understanding the deeper meaning behind things. This transformation became the foundation of my collection.

Through this work, I express both grace and my bubbly personality through varied silhouettes, while also exploring my creativity and capabilities. The collection becomes a celebration of self acceptance, growth, and the confidence to shine, just like gold.

- **Sonali Priya**





Alchemy of Resilience

Some stories are never spoken, they are carried through sacrifice, struggle, and determination to survive. This collection is inspired by those who endure life's harshest realities yet continue to build brighter futures.

Drawing from nature and raw materials, the designs reflect transformation through pressure, pain, and hardship into strength, beauty, and hope. Each garment traces a journey from fragility to resilience and from rawness to refinement.

Contrasting textures, layered surfaces, distressed details, and evolving silhouettes capture the emotional weight of struggle while honoring the quiet power of endurance.

Alchemy of Resilience is a tribute to those who rise despite adversity, proving that extraordinary transformation can emerge from the hardest circumstances.

- Palak Jain







Empire of Self

Empire of Self is inspired by women who embodied royalty as an aura, not a title. In times when female individuality and independence were not easily accepted, they rose through presence, confidence, and fearless defiance. They turned allure into power, challenged convention, and ruled every space on their own terms.

The collection reflects this spirit through bold cuts, striking contrasts, and commanding silhouettes. Rich wine tones, muted taupe, antique gold, and layered neutrals create depth and drama. Sheer textures, fluid drapes, cascading fringe, embellishments, and asymmetrical details bring movement, sensuality, and strength.

Deeply personal, this collection is created by a woman for women, to honor the courage we carry and the power we are often taught to soften. These garments are made not just to be worn, but to awaken the fearless, radiant woman within

- **Shravani Kanade**



Carnival

Carnival is a celebration of fun, energy, and freedom. Inspired by the feeling of bright colors, loud music, and fearless self-expression, the collection captures the joy of simply being yourself. The garments reflect this uninhibited spirit through bold, dramatic, and playful forms. Bright shades of pink, orange, and red symbolize happiness and excitement, while floral elements, layers, and embellishments enhance the festive energy.

Silhouettes balance structured and fluid forms, mirroring the harmony between control and chaos found in carnival. Designed to feel dynamic and full of movement, each piece appears almost as if it is dancing. At its heart, Carnival is about confidence and identity, encouraging individuals to express their true selves without hesitation

- **Riya Mittal**



ASTITVA

Astitva is a deeply personal narrative of survival, tracing a journey through rupture, memory, and healing. Rooted in the idea of existence, the collection transforms pain into something powerful and visible.

Raw textures, distressed surfaces, and exposed stitches express vulnerability, while layered constructions and sculptural forms symbolize resilience and rebuilding. Each garment carries fragments of what was endured, reassembled with intention.

As the collection evolves, it moves from fragmentation to wholeness, from silence to expression. Astitva redefines scars as marks of courage and growth, showing that strength lies not in forgetting, but in continuing to exist unapologetically.

- **Shraddha Santosh Dinde**





Becoming

Becoming is a deeply personal couture collection exploring emotional awareness through fashion. It focuses on feeling rather than suppressing hidden emotions, transforming vulnerability, conflict, and acceptance into evolving silhouettes and avant garde surfaces.

Each garment represents a stage of emotional growth. Longing is expressed through sheer layers and elongated forms that suggest emptiness and reach. Resistance uses structured silhouettes and padded wings to symbolize protection and restraint. Attachment appears through layered garments, restrictive corsetry, and chain like textures reflecting dependency. Creative Transmutation transforms emotion into experimental textures, dynamic forms, and embroidery. Integration concludes the journey with balanced silhouettes, winged embellishments, and floral textures symbolizing wholeness.

Using techniques such as draping, layering, ruching, rust printing, fabric manipulation, and 3D embellishment, the collection turns inner emotions into tangible form.

More than a fashion project, Becoming is an intimate reflection of self growth and emotional transformation.

- Rosette D'Souza





Lure of Lumaire

(The lure of a light source that may not be real - an imagined or distant glow)

This collection explores the longing for unconditional love and the fear that it may never exist. It reflects a cycle of being unheld, yearning, and searching for emotional resolution. Through an agnostic lens, it questions whether God created humans out of loneliness or humans created God to fulfill their need for an eternal, unconditional presence. This tension is expressed through the metaphor of the moth. My lepidopterophobia becomes symbolic, a fear not of moths, but of never finding unconditional love. The moth's life cycle mirrors emotional transformation, seeking, devotion, sacrifice, realization, and return.

The garments evolve with this journey: delicate lace suggests fragility, elongated drapes evoke longing, distressed textures represent decay, and embroidered cape like forms embody transformation. The final looks become softer, lighter, and quietly resolved. The palette draws from exotic caterpillars and moths: crimson for desire, blue for introspection, pink for innocence, gold for glorification, purple for transformation, and brown for grounding. The collection ends not in closure, but in return, where absence becomes desire again, and beauty remains even in decay.

- **Vidhi Kavte**

STUDENTS

2026



PANKHUL SHADANI

9806221000

pankhulshadani27@gmail.com



HIMADRI GARG

8349829100

himadrigarg24@gmail.com



ANANYA VIRMANI

8792816216

ananyavirmani@gmail.com



DEVANSHI VORA

7021567708

voradevanshi2614@gmail.com



KASHISH SHAH

9372824463

Kashish4963@gmail.com



SHREYA DHARESHWAR

8088196388

dhareshwarshreya20@gmail.com



ARCHIE SINGHVI

7700044944

archiesinghvi119@gmail.com



SIDDHI PATIL

8956603610

siddhipatil2505@gmail.com



SAGARIKHA RAVISHANKAR

9943393946

sagarikha8490@gmail.com



RIYA PANKHADE

9921758260
pankaderiya@gmail.com



MAHI SONI

9334070019
ms4021788@gmail.com



RESHMA POTALKAR

9372874938
reshmapotalkar5@gmail.com



JIYA DEDHIA

9820310310
jiyadedhia0603@gmail.com



RIYA PARMAR

9082024945
riyanirmalparmar@gmail.com



SHRUTI D'SOUZA

9867583453
shrutidsouza999@gmail.com



BHOOMIKA PANCHAL

7208761837
bhoomikaa1808@gmail.com



SAKSHI MANTRI

9518551768
sakshimantri3094@gmail.com



VAISHNAVI PHAD

8380030349
vaish052002@gmail.com



SONALI PRIYA

7004756384
priyasonali2001@gmail.com



PALAK JAIN

8007099438
jainpalak2163@gmail.com



SHRAVANI KANADE

8291631468
shravanikanade17@gmail.com



RIYA MITTAL

8053499678

mittalriya2010@gmail.com



SHRADDHA DINDE

7721890890

shraddhadinde31@gmail.com



ROSETTE D'SOUZA

9021084915

dsouzarosette42@gmail.com



VIDHI KAVTE

8433751784

vidhikavte@gmail.com

Gratitude To The Management

Mr. Subhash Ghai, Founder & Chairman
Ms. Meghna Ghai Puri, President
Mr. Rahul Puri, Director Academics
Mr. Ravi Gupta, Dean
Mr. Chaitanya Chinchlikar, Vice President

Design Mentor

Mr. Jewellyn Alvares

Technical Mentors

Ms. Sayli Sawant
Mr. Lancy D'silva
Mr. Reyaz Ahmad
Ms. Florine D'souza
Mr. Parvez Qureshi

Co-ordination & Student Team Management

Ms. Catherine Barretto

Special Thanks To

Ms. Laili Dutta
Team Operations
Team IT & AV
Team Stores
Team Admin
Team Accounts

Photography & BTS

Mr. Pravin More
Mr. Devendra Jagtap
Mr. Omkar Pandhare
Mr. Mangesh Koyande

Photoshoot Team

Ms. Shivani Vora
Students, School of Fashion & Costume Design

Photography

Mr. Chandrahas Prabhu

LOOK BOOK Design & Graphics

United 270

SOCIAL MEDIA AND BTS CONTENT

Button Creative Agency
Ms. Nidhi Pancholi

Show Director

Mr. Ravneet Goraya

Backstage Management

Ms. Kamal Mehta

Models & Talent

Runway Lifestyle

Music & Performance

Students, WWI School of Music

Hair & Makeup

Artist Factory & Daniel Bauer Academy

Marketing Support

Ms. Riddhi Bhogi
Mr. Jubin Chacko
Ms. Riya Goyal
Ms. Khushveen Anand
Mr. Ameesh Jaisinghani

Department of Events

Mr. Sambit Mohanty
Mr. Suraj Dighaskar

Internships and Placements

Ms. Anjali Fulia and Team

Location & Studio Co-ordination

Ms. Cynthia Rajpal

Faculty

Mr. Rahul Puri
Mr. Jewellyn Alvares
Dr. Rugmani V
Mr. Lancy Dsilva
Ms. Sayli Sawant
Ms. Sabira Fernandes
Mr. Reyaz Ahmad
Ms. Nidhi Pancholi
Mr. Sahil Gada
Mr. Anuj Bhatt
Mr. Rohit Goyal
Ms. Momita Sharma
Mr. Nikhil Purohit
Ms. Radha Rapelli
Ms. Anamika Bannerjee
Mr. Umesh Mohite
Ms. Florine D'souza
Mr. Parvez Qureshi

Academic Co-ordinator

Ms. Tejasvini Ahuja

Programme Overview

Bachelor of Design:

A 4-Year Degree Programme, that provides advanced knowledge and insights into the contemporary fashion industry, offering a well-rounded educational experience.

Comprehensive Foundation

Aims to build a strong foundation in all key aspects of fashion design, preparing students for the global fashion industry.

Personalised Creativity

Encourages students to develop their own brand of imagination and creativity, helping them find their unique voice as a designer.

Skill & Knowledge Development

Equips students with the skills, knowledge, aesthetic, and technical skills needed to succeed and realise personal ambitions in the fashion industry.

Industry Experts

Masterclasses led by practicing designers and industry specialists, providing students with real-world insights.

Hands-On Learning

Includes field visits to collaborate with local artisans, teaching students to create garments with Indian textiles that have a universal appeal.

Eligibility:

10+2 or equivalent from any recognised Board/University

Entrance:

General Aptitude Test, Creative Ability Test, Interview

Overview of Textile & Apparel Industry

Global Leader: India is the second-largest producer of textiles and garments in the world.

Significant Growth: The Indian textiles and apparel industry is expected to grow to US\$ 223 billion by 2028 (Technopak Advisors).

Global Impact: India accounts for 24% of the world's spindle capacity and 8% of global rotor capacity.

Key Economic Contributor: The textile industry contributes to 14% of industrial production, 4% of GDP, and 27% of foreign exchange inflows.

Sourcing Hub: Abundant availability of raw materials such as cotton, wool, silk, and jute, combined with a skilled workforce, positions India as a global sourcing hub.

Direct Employment: The industry generates significant employment and impacts the growth of the Indian economy.

Types of Courses:

There are courses in this programme, some mandated while others are chosen by students.

General Education Courses:

These courses offer a context to students learning, enabling them to understand historical developments in their specific areas of interest as well as allied areas such as classical and folk art, cinema, photography, urban mythology, and digital art etc. These are 30 credits overall during the 4-year programme.

Core Courses:

Mandated by the Programme Head, all students must take these courses to develop a strong foundation in fashion design.

Why Us

Holistic Education

Our students gain both theoretical knowledge and hands-on practical experience, ensuring they are versatile, industry-ready professionals. As part of this, students have the invaluable opportunity to showcase their work at prestigious events like the International Fashion Week providing real-time exposure to the industry's standards and practices.

Industry-Driven Learning

Regular masterclasses led by seasoned industry experts keep students up to date with the latest trends, techniques, and best practices, helping them stay ahead in a competitive field.

Field Experience

Engaging directly with local artisans and creating designs with Indian textiles that resonate globally offers students a distinct advantage and deepens their understanding of cultural and contemporary design.

Personalised Growth

We emphasise individualized guidance to nurture each student's unique creative strengths, providing support to polish their talents and overcome challenges.

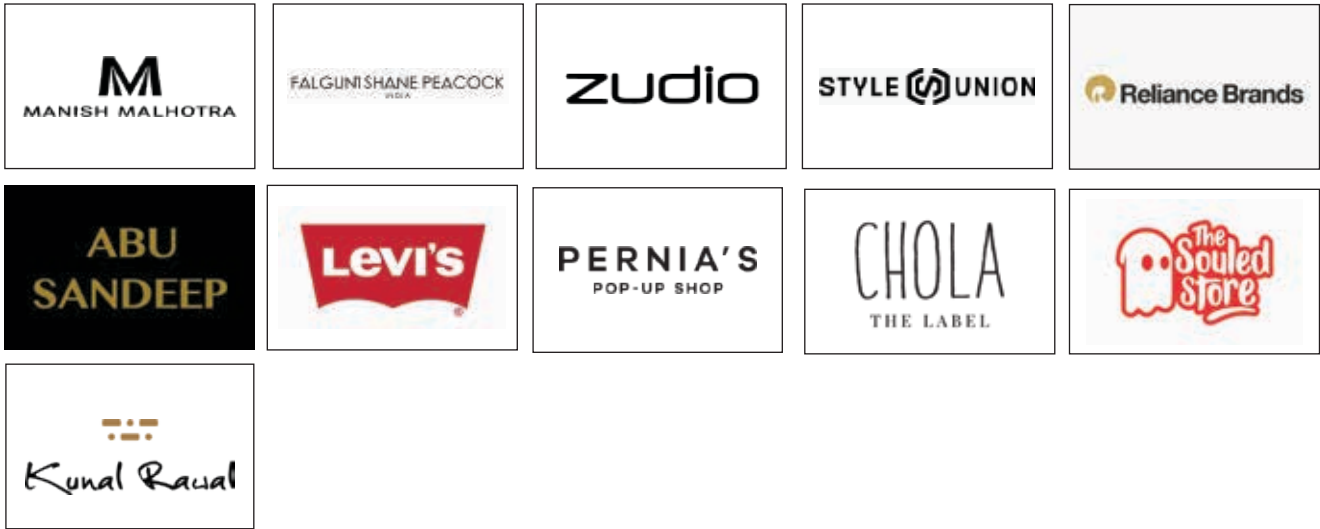
Collaborative Learning

A spirit of teamwork and collective is harbored through projects and coursework to build a community, simulate real world challenges and transfer of ideas.

Global Exposure: Our programme is designed to cultivate skills for the global fashion industry, fostering innovative thinking and problem-solving abilities that prepare students for international success.



Alumni Success Story



Our Alumni Brands



**Batch Of
2026**





SCHOOL OF FILMMAKING | SCHOOL OF CREATIVE ARTS | SCHOOL OF MEDIA COMMUNICATION
& MANAGEMENT | SCHOOL OF PERFORMING ARTS | WWI EXTENSION

Whistling Woods International, Filmcity Complex, Goregoan (East), Mumbai - 400065, Maharashtra, India.

www.whistlingwoods.net